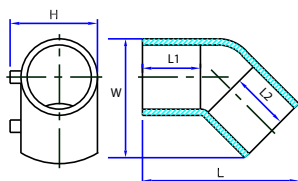


# Product Range



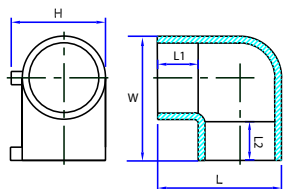
## 45° Elbows

Nominal diameter mm	Pack qty	Dimensions mm					Max weight kg	Fuse time sec	Cool time min	Product code 40 V 4.0 mm pin
		H	L	L1	L2	W				
63	1	100	167	58	58	128	0.32	60	8	WB3316
90	1	132	222	77	77	176	0.82	80	9	WB3318
125	1	175	269	82	82	228	1.84	90	7	WB3320
180	1	240	350	101	101	308	4.11	260	16	WB3323



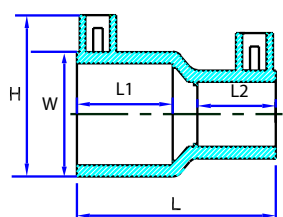
## 90° Elbows

Nominal diameter mm	Pack qty	Dimensions mm					Max weight kg	Fuse time sec	Cool time min	Product code 40 V 4.0 mm pin
		H	L	L1	L2	W				
63	1	100	143	58	58	143	0.4	60	8	WB3345
90	1	133	195	77	77	195	0.98	80	9	WB3347
125	1	178	246	82	82	246	2.14	90	7	WB3349
180	1	240	329	101	101	329	5.16	260	16	WB3352



## Reducers

Nominal diameter mm	Pack qty	Dimensions mm					Max weight kg	Cool time sec	Fuse time min	Product code 40 V 4.0 mm pin
		H	L	L1	L2	W				
90 x 63	1	133	154	80	60	117	0.5	120	10	WB4281
125 x 63	1	177	164	91	63	159	0.96	160	18	WB4287
125 x 90	1	170	180	89	75	155	1.04	120	18	WB4289
180 x 125	1	231	200	93	79	216	1.9	280	24	WB4297
250 x 180	1	314	240	117	99	300	4.73	440	22	WB4319
315 x 250	1	390	275	133	110	380	8.26	520	21	WB4332



Always refer to the fitting and packaging label for the most up to date information.