

## 25 - 63mm Puriton mechanical fitting jointing procedure



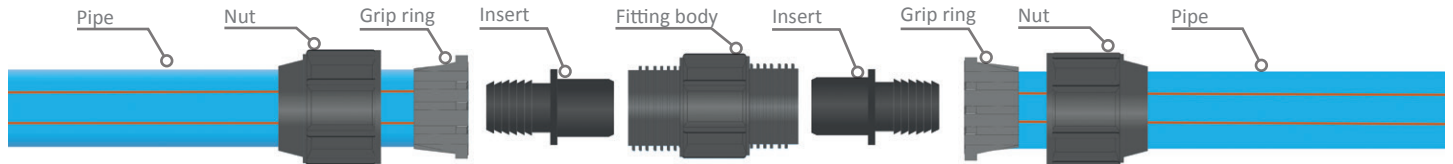
**RADIUS**  
Systems

### Jointing procedure applicable to all Puriton® mechanical fittings\*

Fitting diameter	25 mm	32 mm	63 mm
Grip ring colour	Blue	Blue	Grey
Insert colour	Black	Black	White



Minimum recommended personal protection equipment



Ensure the pipe is cut square and damage free. Re-round if necessary. Slide the nut and grip ring on the pipe

Using a rubber mallet, gently tap the insert fully into the pipe end

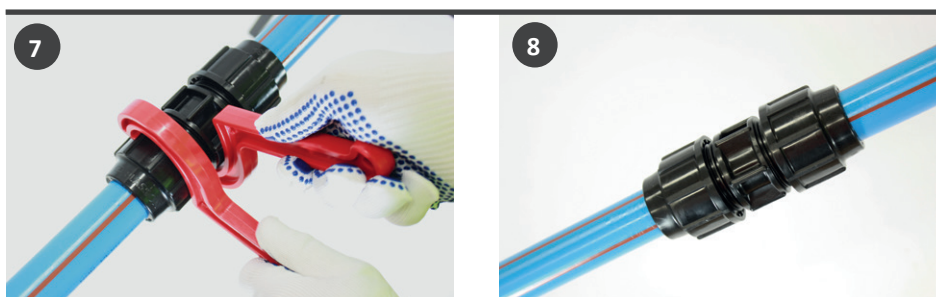
Push the pipe fully into the body of the fitting



Slide the grip ring so it is flush with the pipe end

Hand tighten the nut onto the body of the fitting

Repeat steps 1 to 5 for additional pipe end connections



Using C ring wrenches fully tighten the nuts onto the body of the fitting

The joint is complete. Carry out a water industry approved joint pressure test to check for leak-tightness.



### Radius Systems Ltd

Radius House, Berristow Lane, South Normanton  
Alfreton, Derbyshire, DE55 2JJ, United Kingdom  
t: +44(0)1773 811112 e: sales@radius-systems.com  
w: www.radius-systems.com



**RADIUS**  
Systems

Innovators of pipeline technologies